

Clarkson KS1

Slurry Isolation Technology



Experience Industrial Innovation

Engineered to improve service life in severe oil sands applications and reduce your total cost of ownership.



A true Bi-directional, Zero-leakage ASME Class 150 Knife Gate Valve designed for the rigors of Severe Service.

Local Service

Spartan's Fort McMurray repair facility is our Knife Gate repair center of excellence. The shop offers 18,000ft² of shop space with dedicated isolation service advisors, valve and actuator technicians. 10T bridge crane w/ 20-ft lift height and a hydro stand capable of shell and seat leak testing for up to 36" valves makes for safe, efficient and effective repairs.

Application Knowledge

1. Slurry pump isolation
2. Extraction Separation Cells/Vessels
3. Tailings processes
4. Process Effluent Water

Service Life

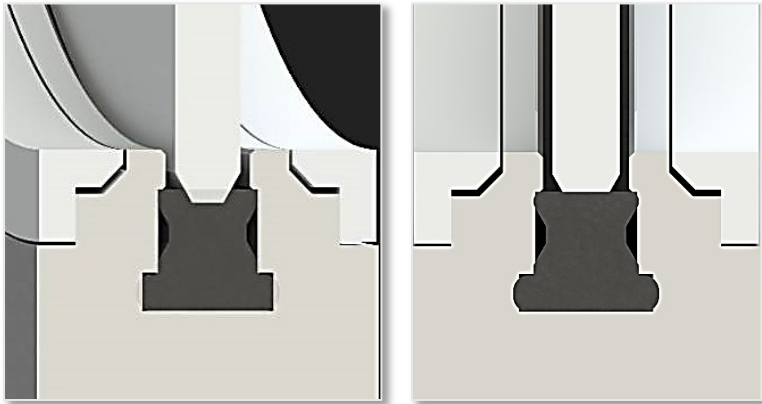
- Tiered repair kits available.
- Extend the life of the valve with rotatable, replaceable wear rings on the inlet and outlet as a standard.
- Make rapid in-line adjustments to the sealing system, to maintain sealing performance
- Valve design allows end users to experience optimal Total Cost of Ownership

Allow Spartan Controls to be your valve partner for your oil sands applications.
Contact Sean Campbell at the local Ft. McMurray office.
780-790-0440



Heavy-duty Precision-molded Elastomer Seat Provides More Surface Area for Superior Isolation and Reliability.

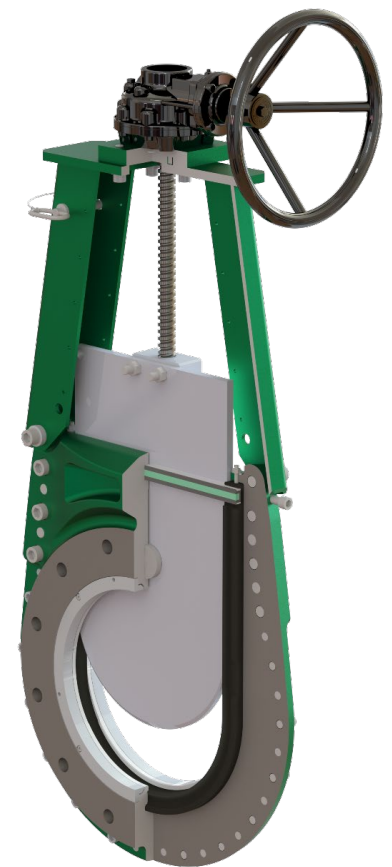
Emerson Seat



- **Resilient, heavy cross-section** has high contact area with gate to maximize seat life and zero-leakage isolation over time
- **Substrate** supports seat in the installed position and prevents over-compression
- **Chamfered gate edge** deflects media away from the seat, allowing it to seal completely
- **Wear rings** protect valve internals and seat while facilitating smooth flow through the port
- Fully symmetrical design is **truly bi-directional**

Clarkson™ KS1 Key Features

- **ANSI Class 150**
- **Non-Discharging**
- **True bi-directional flow** and **zero leakage shut-off**; can be installed in either direction
- **Heavy cross section precision-molded elastomer seat** provides more surface area for superior isolation and is mechanically retained
- Field-adjustable, **patent-pending gate edge seal** system prevents leakage through top of valve
- **Full round port** and seat design offers **low pressure drop** across valve and **longer service life** in abrasive applications
- Standard inlet & outlet replaceable and rotatable integral **Ni-resist wear rings** extend service life
- **Enclosed body** design prevents any leakage to the outside environment
- **Modular frame design** allows for installation of any standard accessory without modification
- **Non-rising stem** reduces valve profile and actuation torque



Call us or request a quote online 24/7 + 1 (877) 278-6404

www.spartancontrols.com | info@spartancontrols.com

Experience Industrial Innovation